

## OFFICE/WAREHOUSE SPACE

# FOR LEASE 1,765± SF

McDowell Mountain Business Park

16585 N 92nd St. | Suite B106 | Scottsdale, Arizona 85260



**RANDY SHELL**

Designated Broker

O 480.443.3992

C 480.694.4100

randy@shellcommercial.com



**AMANDA WRIGHT**

Associate

O 480.443.3992

C 480.236.0037

amanda@shellcommercial.com



## FEATURES

- Large reception
- Two (2) offices
- Restroom
- 100% HVAC warehouse with 12'x14' roll-up door
- Minutes from Loop 101 onramp

**I-1 Light Industrial, City of Scottsdale**



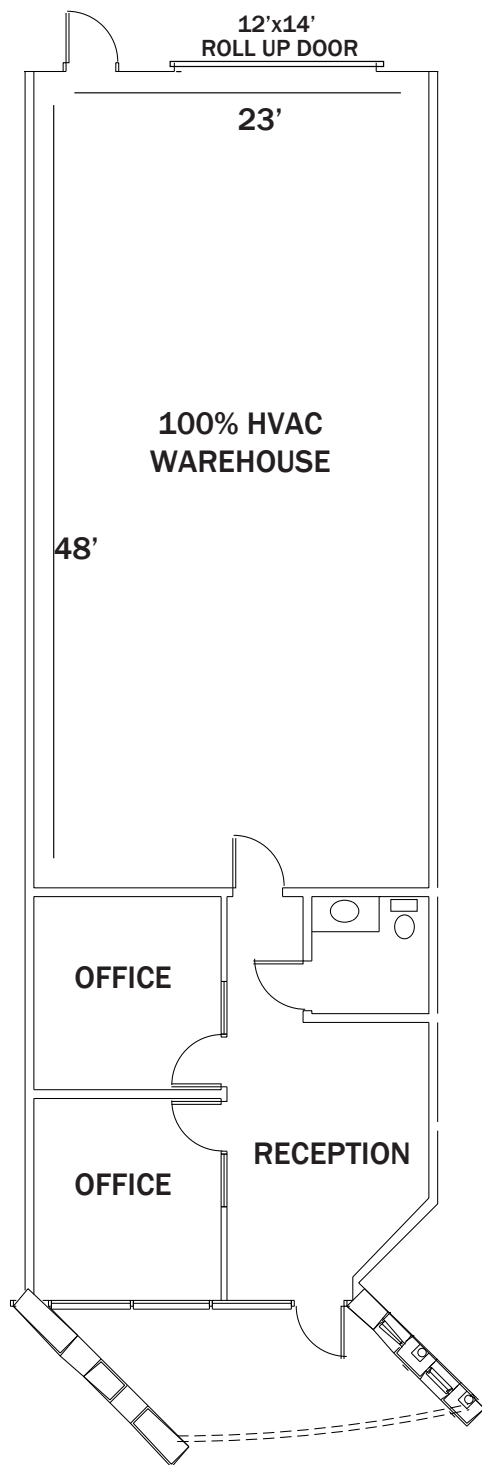
480.443.3992 [www.shellcommercial.com](http://www.shellcommercial.com)

16410 N 91st St | Suite 112 | Scottsdale, AZ 85260

All information contained herein is subject to prior sales and leasing. This information has been secured from sources we believe to be reliable, but we make no representation or warranties, expressed or implied, as to the accuracy of this information.



1,765± SF



## EXCELLENT NORTH SCOTTSDALE LOCATION



### NOT TO SCALE

All information furnished regarding property for sale, rental or financing is from sources deemed reliable, but no warranty or representation is made to the accuracy thereof and same is submitted to errors, omissions, change of price, rental or other conditions, prior to sale, lease or financing or withdrawal without notice. No liability of any kind is to be imposed on the broker herein. This information has been secured from sources deemed reliable, however, we make no warranties as to its accuracy.